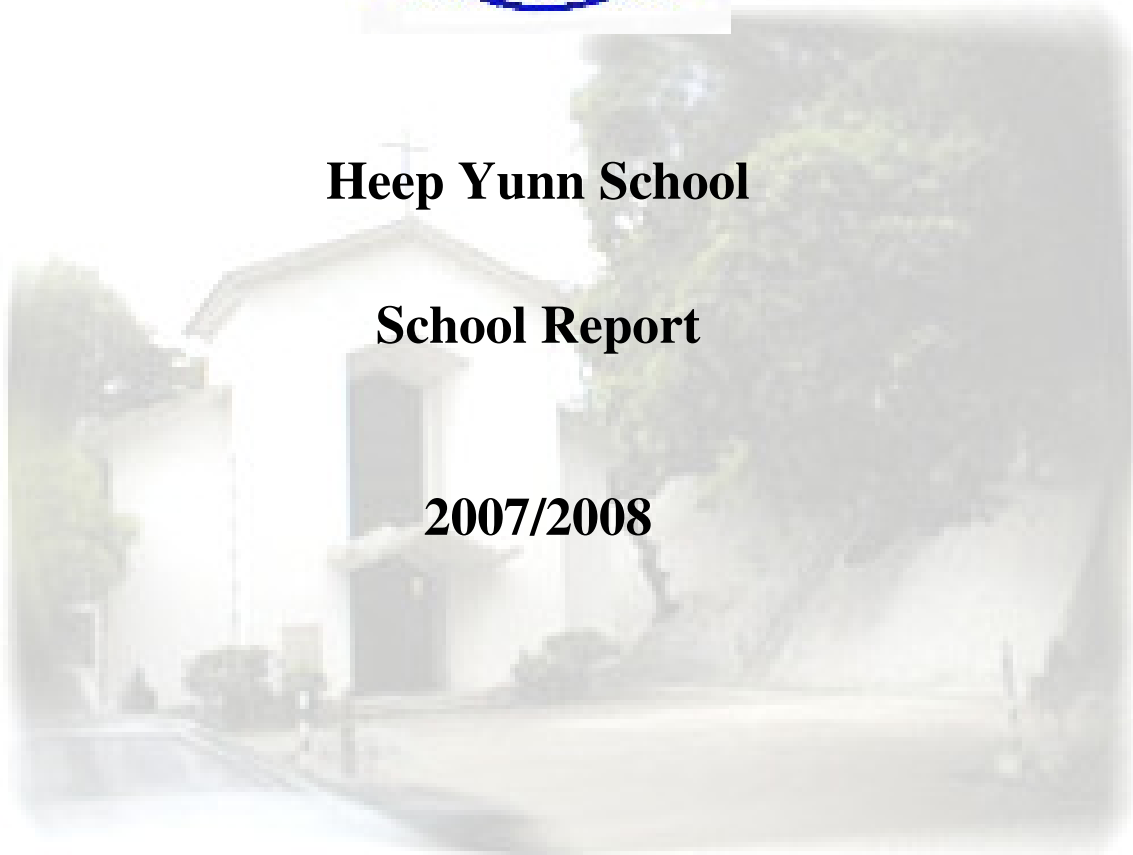




Heep Yunn School

School Report

2007/2008



School Vision & Mission

It is the mission of the school to provide our students with a Christian education that develops the whole person in the following areas: moral, intellectual, physical, social, aesthetic and spiritual; to instill in our girls a spirit of public service, and to build a firm foundation in both Chinese and English.

Our School

History of Heep Yunn School

Heep Yunn School is a Sheng Kung Hui grant-in-aid school for girls. It was established when two schools founded by the Church Missionary Society - the Fairlea School(1886) and Victoria Home and Orphanage(1887) were merged in 1936 at the present site in Farm Road. This accounts for the name “Heep Yunn”- meaning the union of the two schools through the grace of God.

School Council

The Rt. Rev. Louis Tsui (Chairman)

Rev. Dr. H. C. Chan (School Supervisor)

Mr. Iain Bruce (Hon. Treasurer)

Mr. C. H. Lee (Acting Headmaster and Hon. Secretary)

Mrs. B. Cheng

Dr. C.Y. Cheng

Mr. Ronald Chow

Mrs. Linda Fung

Mrs. Yvonne Ip

Miss Fion Lee

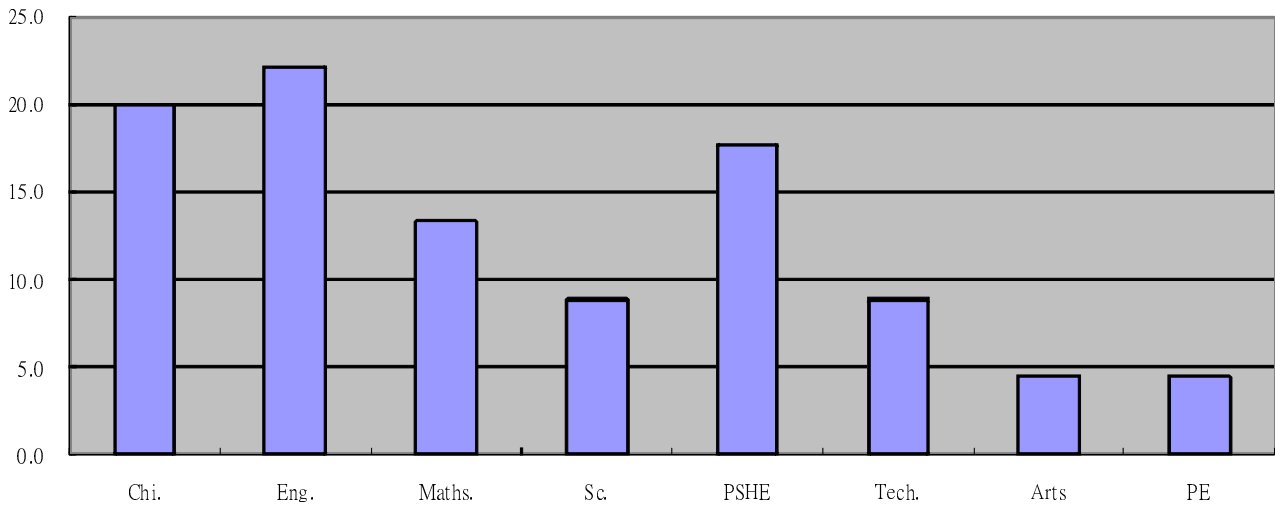
Mr. Michael Leung

The School Campus

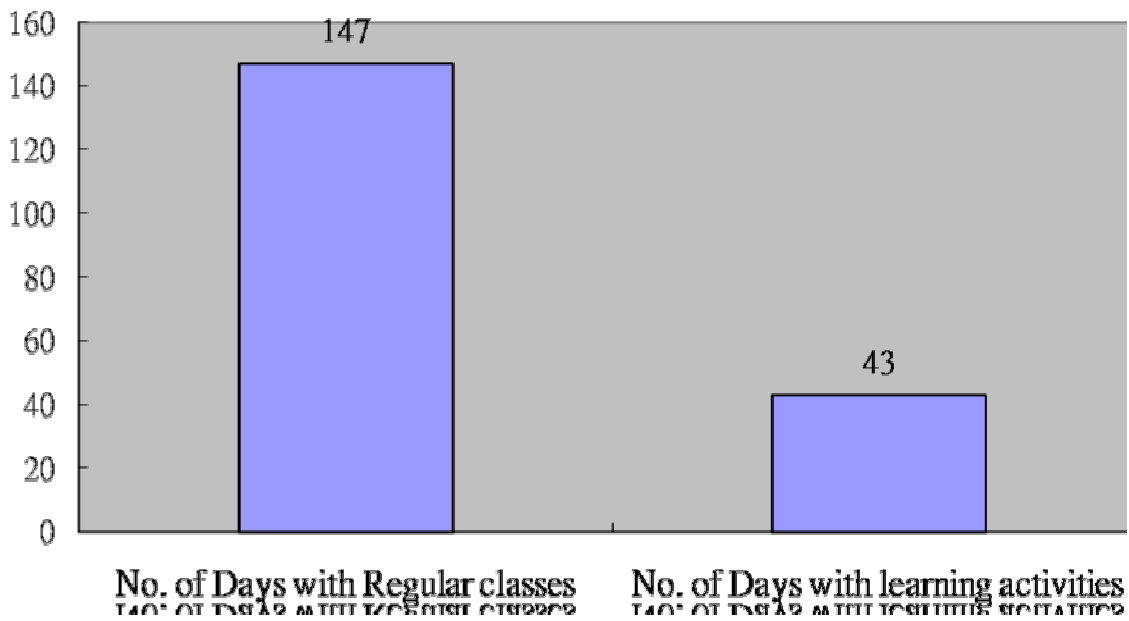
The school is located on a 11,000 sq. m. campus consisting of six building blocks: the Main Building(1936), the Chapel(1957), the Extension Building(1964), the Library(1966), the Jubilee Building(1986) and the Multi-Purpose Building (2005). Outdoor facilities include a 25-meters swimming pool, two tennis courts and two basketball courts (all multi-purpose), a rest garden, a parking area and a lawn. Other facilities include the School Hall, the Dining Room, Student activity centre, Multi-purpose Room, Drama Laboratory, 31 classrooms, 19 special rooms, and a 3-storey high sports centre.

Lesson time for the 8 Key Learning Areas and Number of Active School Days

Lesson Time for Each KLA



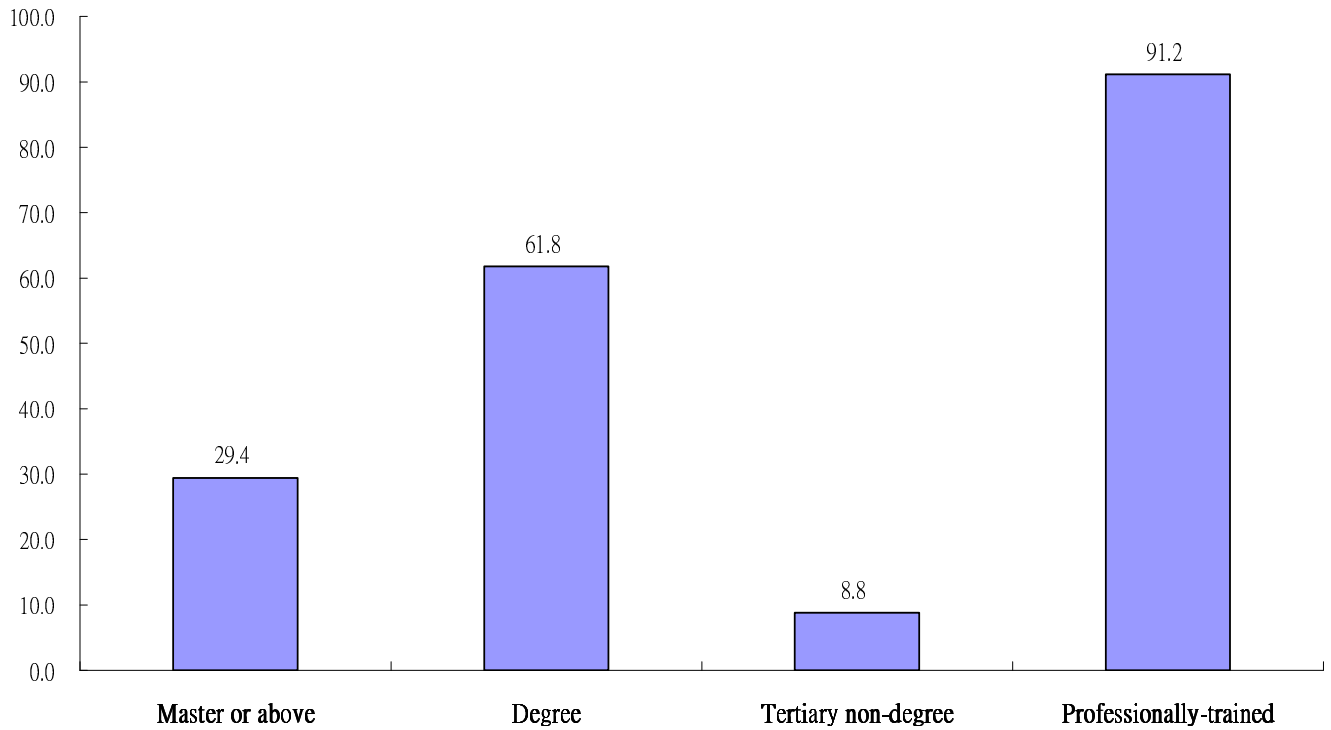
No. of School Days



Our Teachers

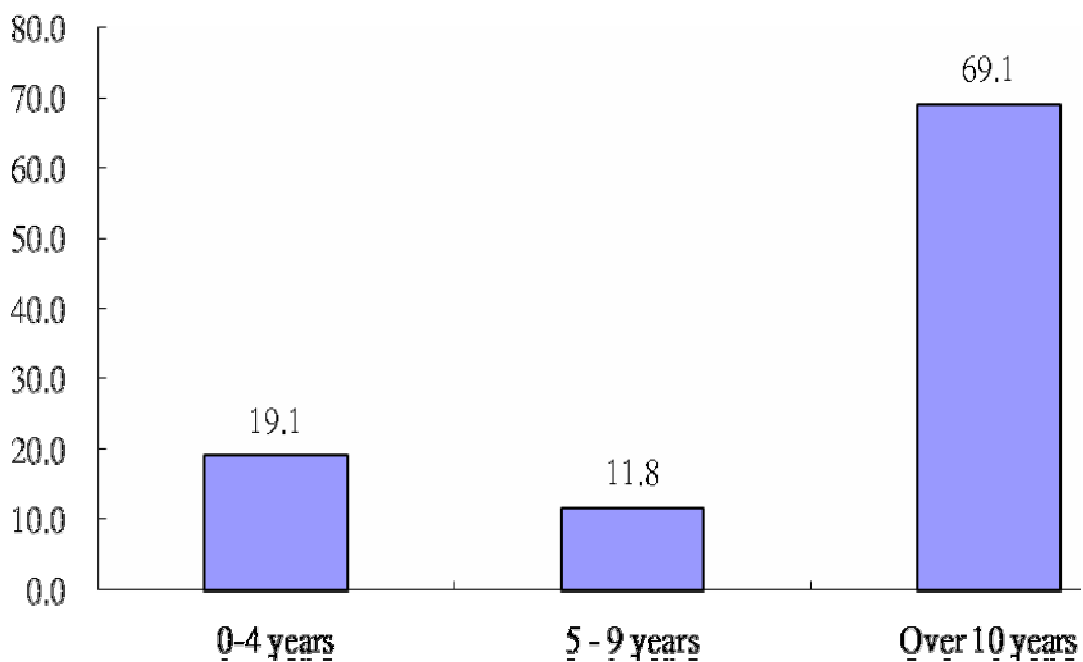
Teachers' Qualification

Teachers' Highest Qualification (%)

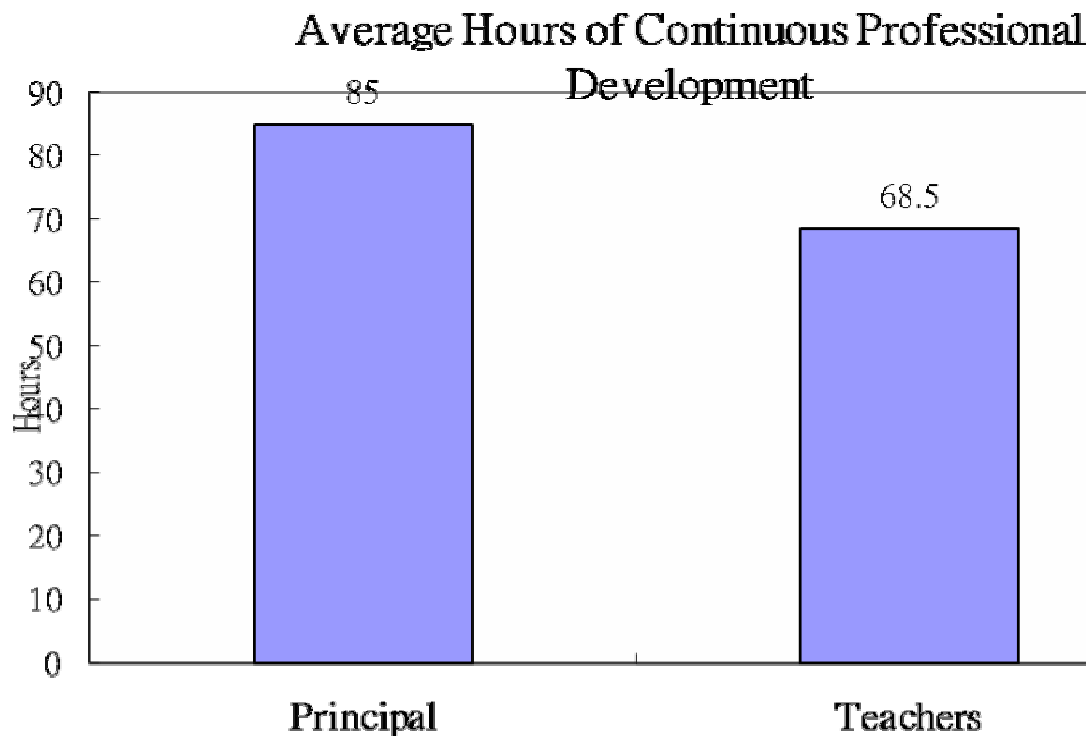


Teachers' Experience

Teachers' Experience (%)



Continuous Professional Development



Our Students

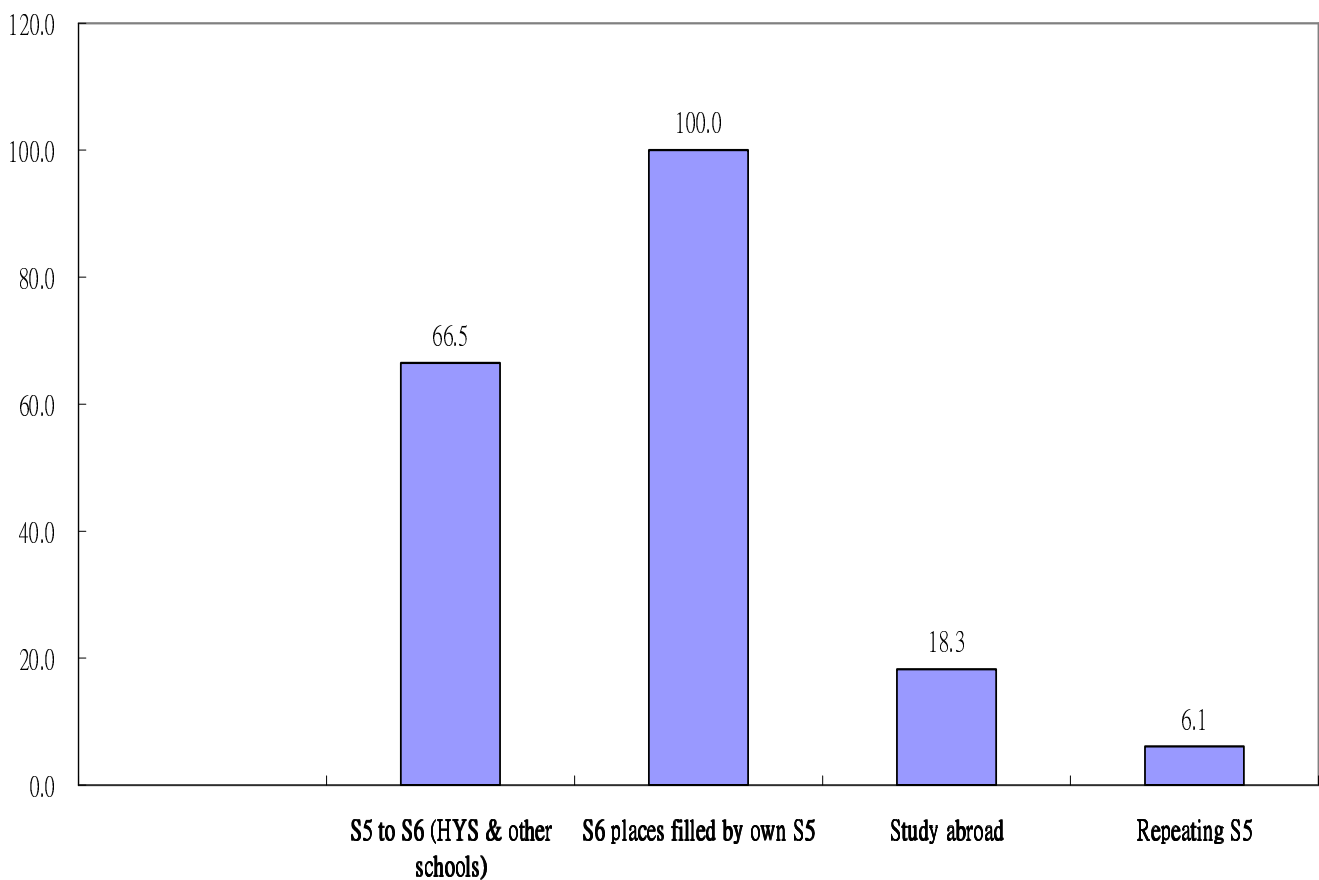
Enrollment and Class Structure

There are 31 classes, with approximately 1200 students enrolled. Class structure is as follows:

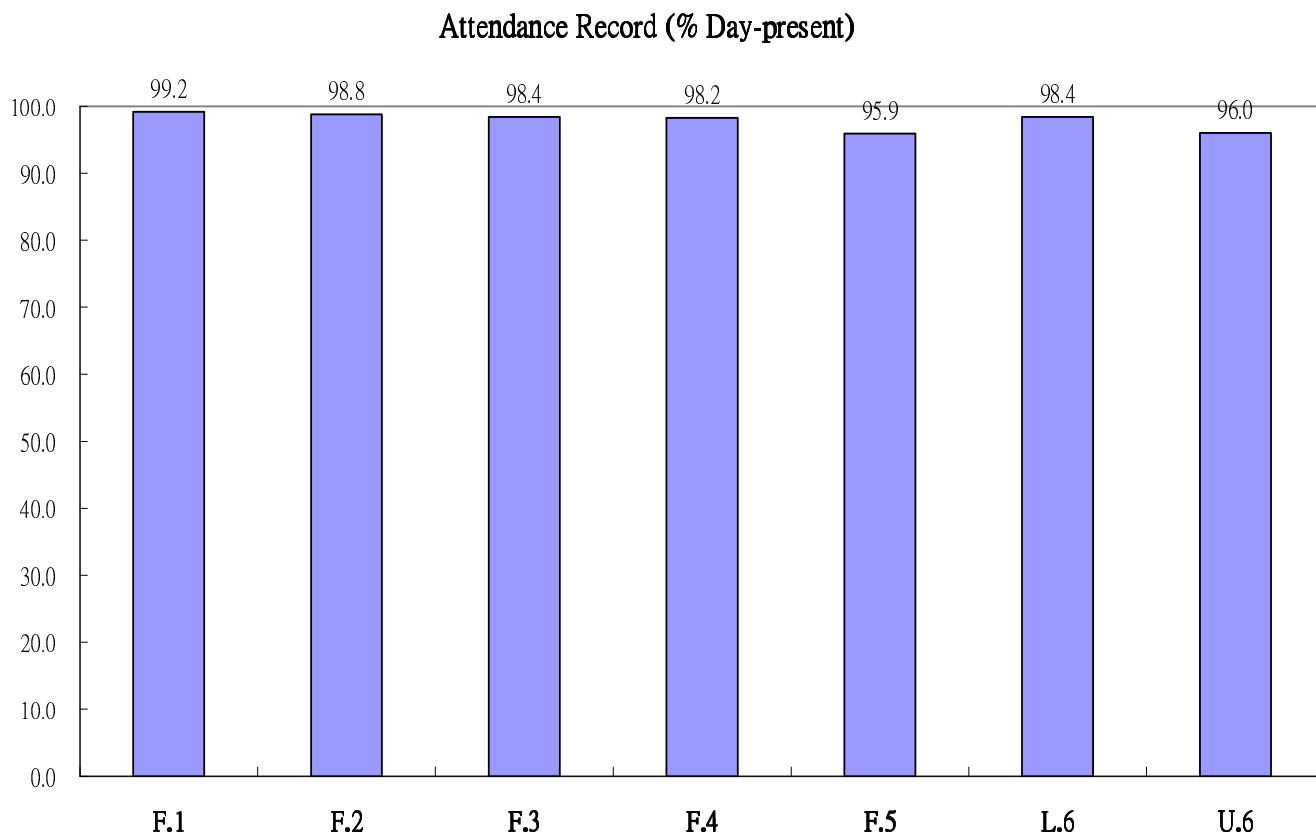
Level	S1	S2	S3	S4	S5	S6	S7	Total
No. of Classes	5	5	5	Arts:3.5 Sc: 1.5	Arts:3.5 Sc: 1.5	Arts: 2 Sc: 1	Arts: 2 Sc: 1	31
Total Enrollment	219	218	208	199	200	100	84	1228

Students' Promotion

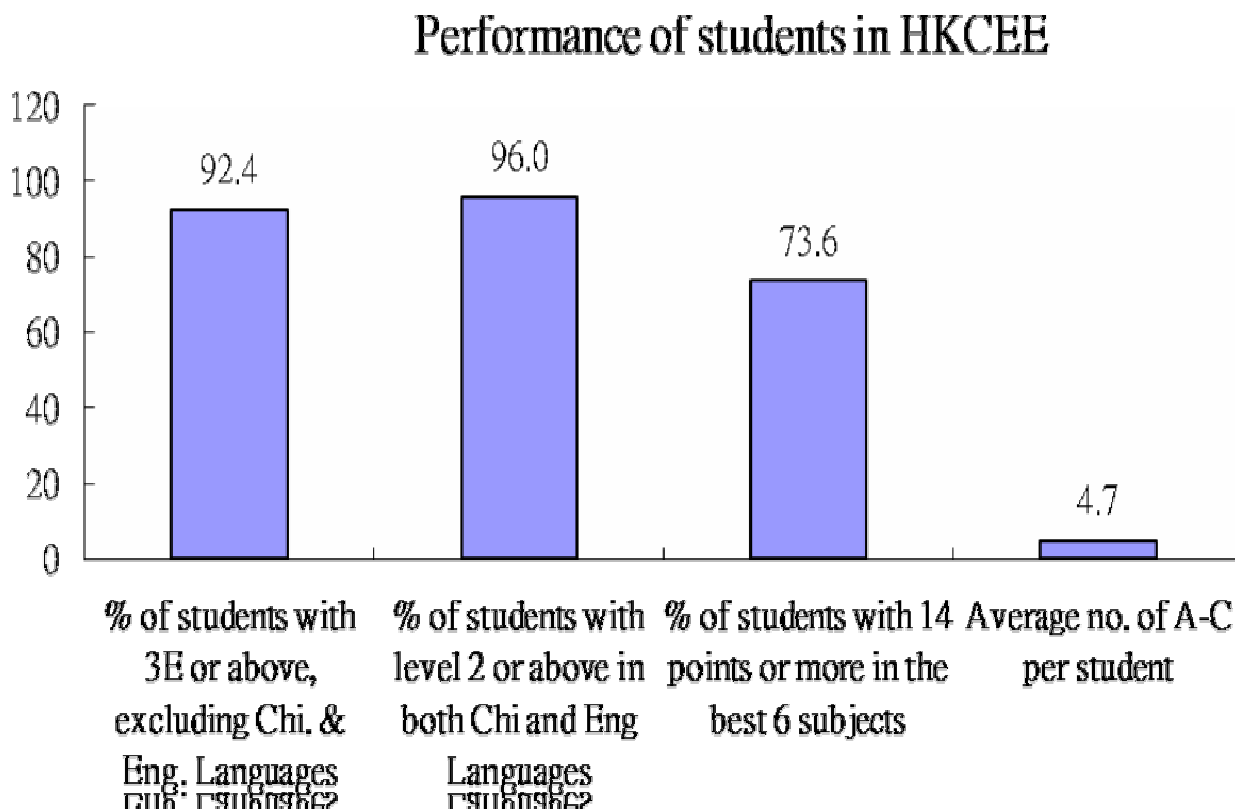
Student Promotion (%)



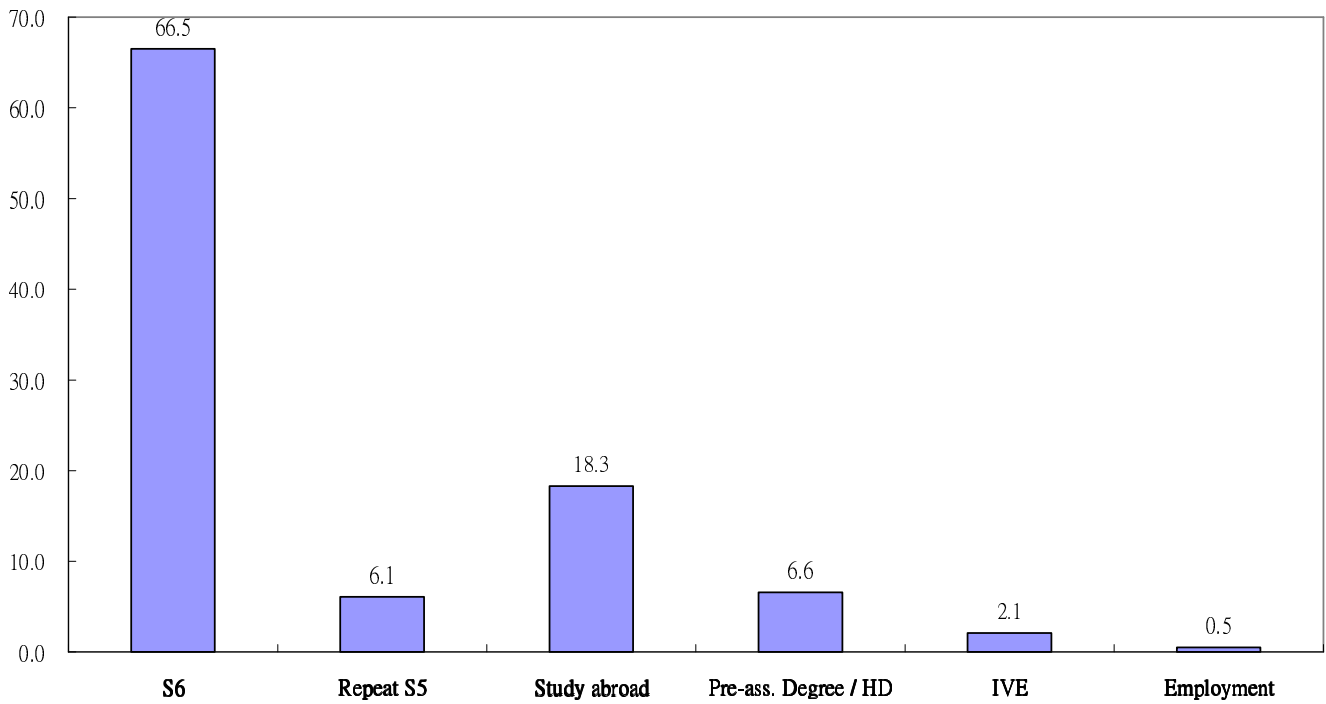
Students' Attendance



Performance of Students S5 Students

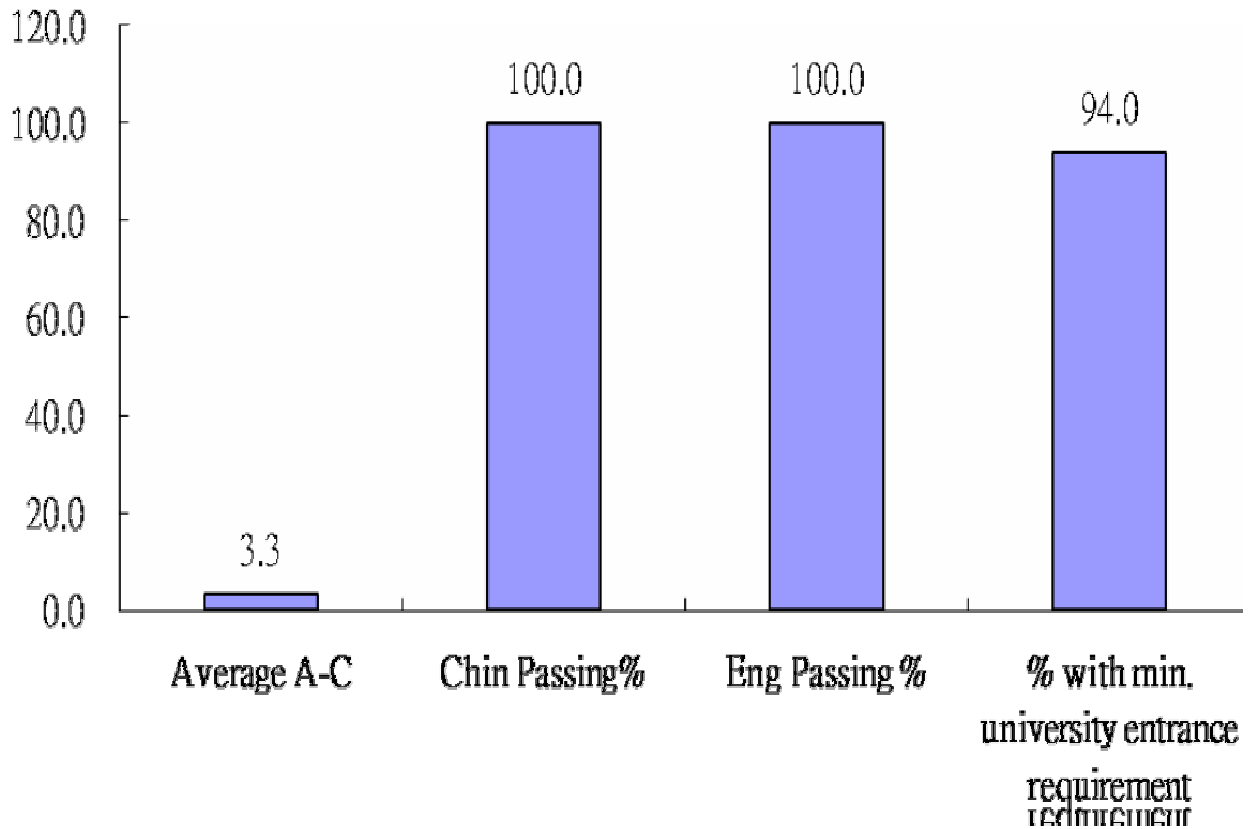


Students' Exit (S5) (%)

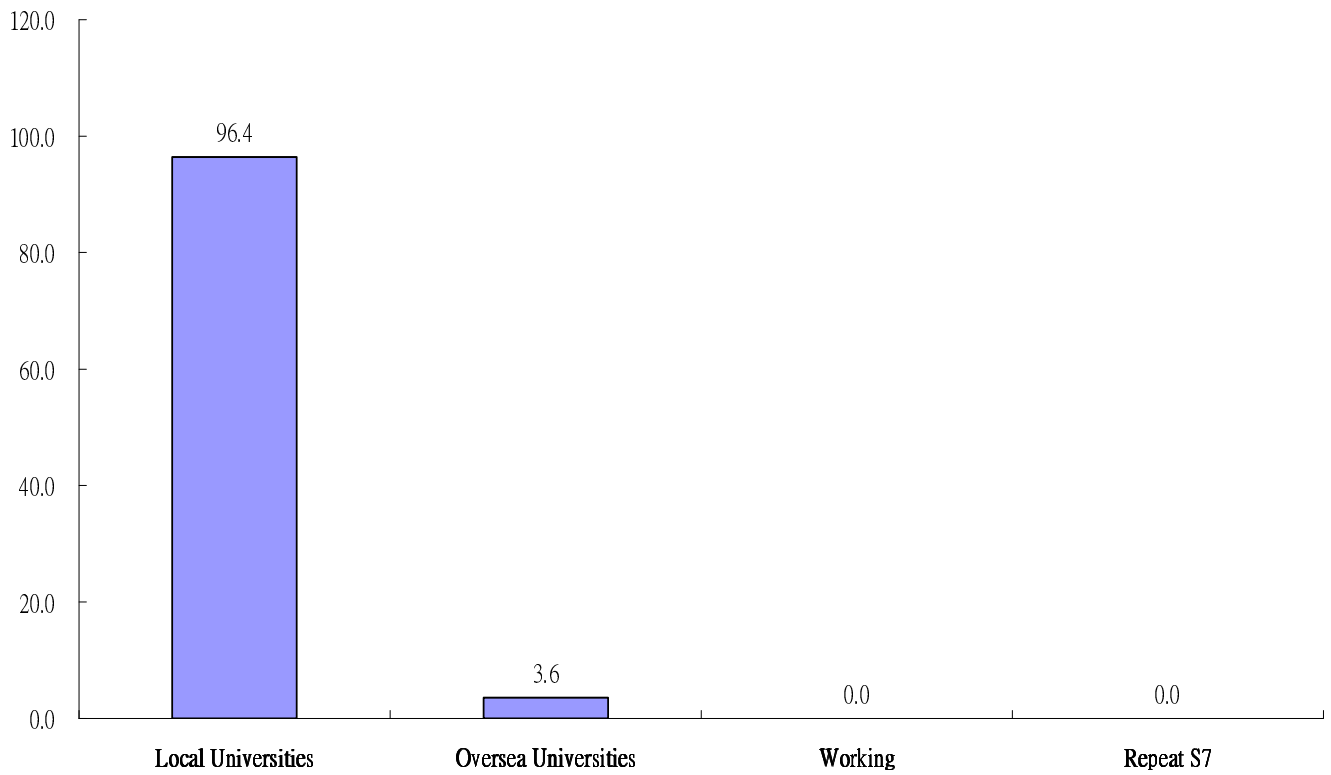


S7 Graduates

Performance of students in HKALE

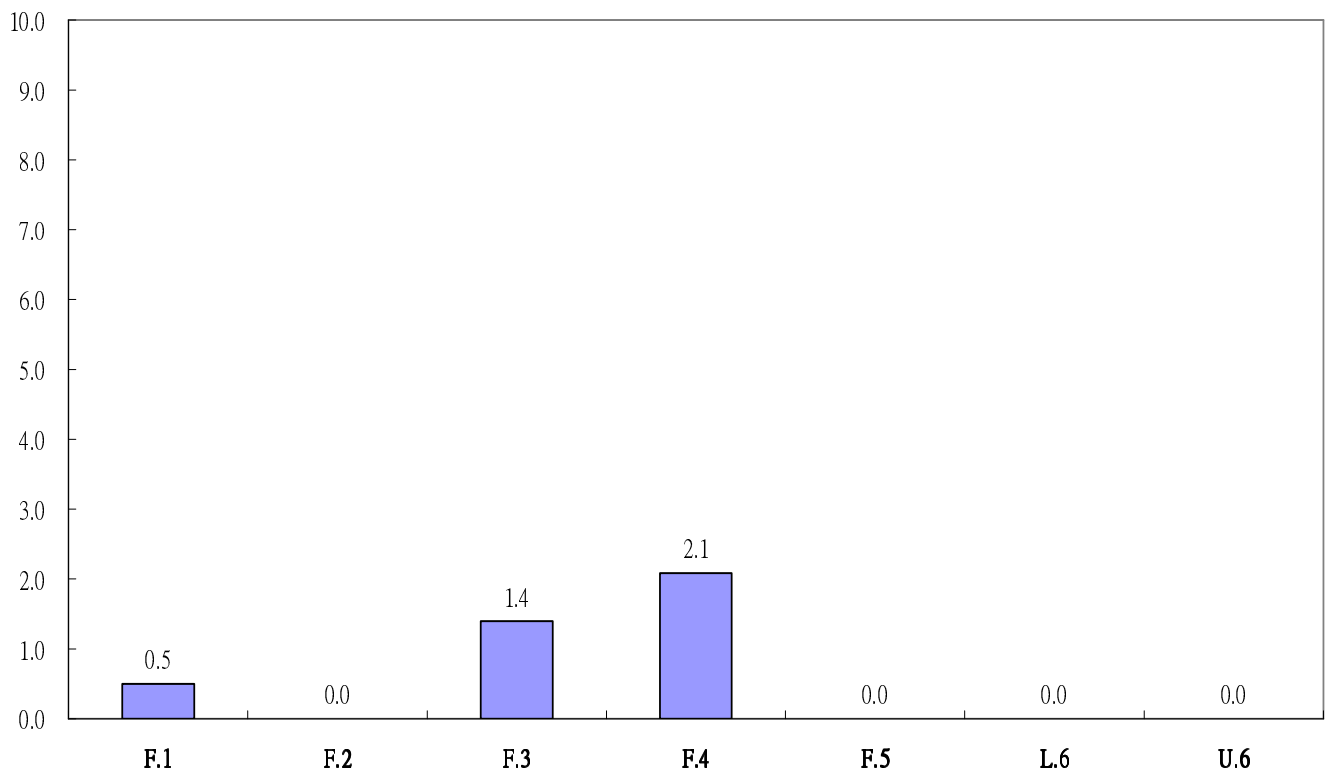


Students' Exit (S7) (%)



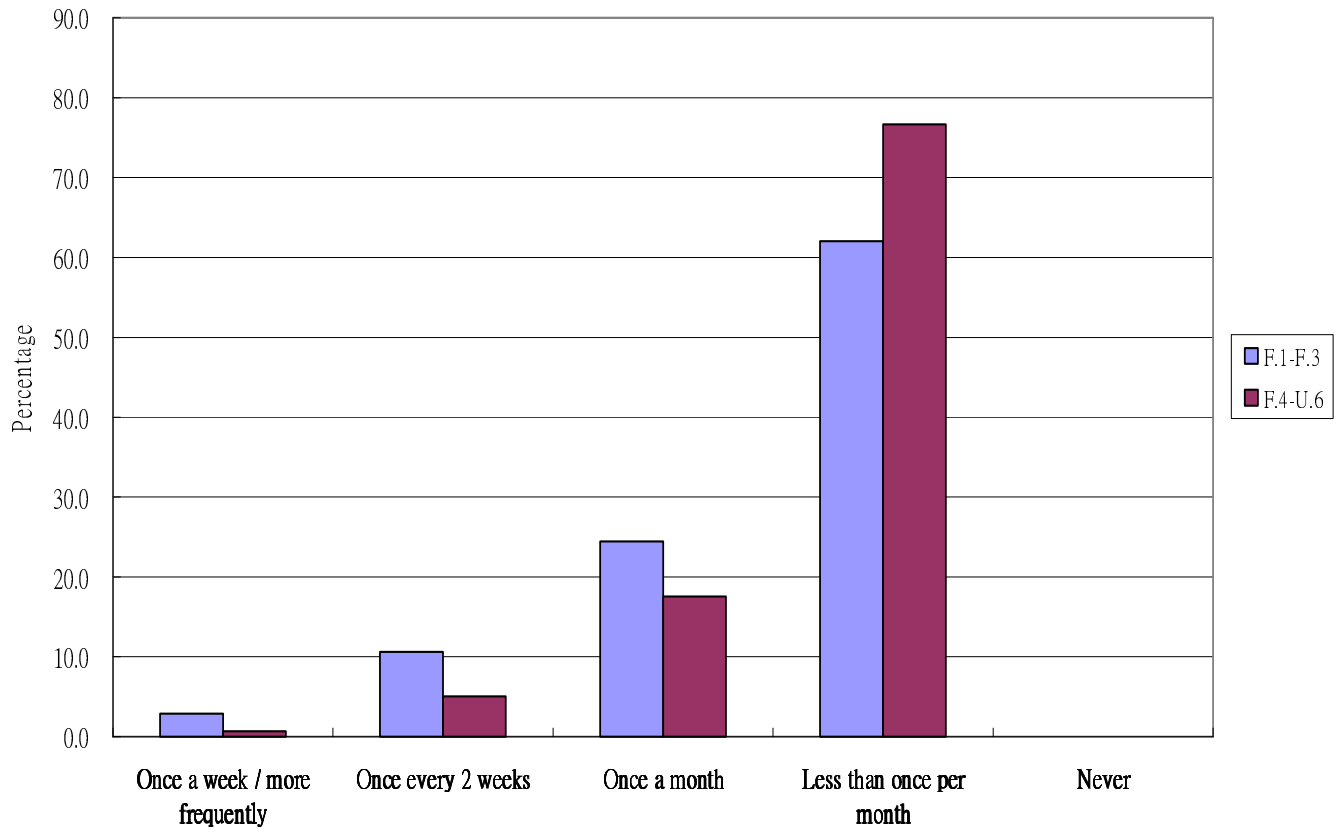
Early Exit Students

Early Exit Students (%)



Students' Reading Habit

Reading Habit



*Students also make use of resources via internet services and public libraries

Report on the Use of Capacity Enhancement Grant 2007 / 2008

Grant received from EDB:	Recurrent	\$436,476
	Time-limited	\$654,732
	Total:	\$1,091,208

Expenditures:

- 4 additional teachers and 1 teaching assistant were employed to teach Chinese, English and Mathematics, help in oral training for students from Form 1 to Upper 6, and training of students for debating. (Salaries and MPF = \$1,138,104)
- Subscription to an English training program to help reconsolidation of learning (\$32,000)
- A part time social worker was hired to organize programme for students with special needs (\$40899.6)

Report on the Use of Teacher Professional Preparation Grant 2007 /2008

Grant received from EDB: \$500,000

Expenditure: An additional teacher is employed to release 2 senior teachers to coordinate the development of the School-based NSS Curriculum. (Salary and MPF = \$300,600)

During the year from Sept. 2007 – Aug. 2008, 33 teachers attended a total of 130 courses related to the NSS curriculum.